

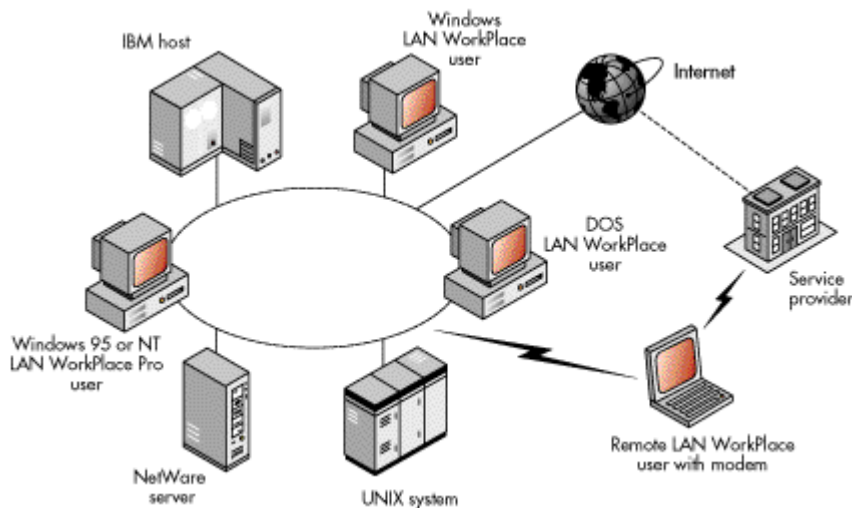


LAN WorkPlace Pro for Windows 95 and NT: Product Details

LAN WorkPlace® Pro is a comprehensive application suite that provides concurrent access to UNIX, mainframe, and Internet resources for remote desktops and for NetWare®, Windows NT, and TCP/IP network users. LAN WorkPlace Pro extends the features of award-winning LAN WorkPlace 5 for MS Windows and DOS and LAN WorkGroup™ 5 for MS Windows and DOS. Depending on your administration needs, you can choose to install LAN WorkPlace Pro on individual workstations or on your server.

LAN WorkPlace Pro provides a full suite of applications that lets you transparently access a wide range of information and services using TCP/IP, one of the world's most widely used networking protocols. These applications include Netscape Navigator (an Internet browser with integrated E-mail and news reader), terminal emulators, File Transfer Protocol (FTP) file transfer, file and print sharing between UNIX and PC systems, X-Server, and more.

Figure 1: LAN WorkPlace Pro for Windows 95 and NT gives you quick and easy access to NetWare, TCP/IP, and Internet resources.



Features

- Installs easily on individual desktops or on servers and offers three installation options
- Offers NetWare® and Windows NT users centralized configuration and management
- Takes advantage of native Windows 95 and NT capabilities
- Provides a full-featured 32-bit TCP/IP application suite, which offers the following services:
 - Netscape Navigator, with a news reader and mailer
 - World-class terminal emulation, including TN5250, TN3270, and VT420 clients
 - FTP and NFS file sharing
 - Improved X/Open certified X Window System application sharing
 - Enterprise print services

Easy Installation

LAN WorkPlace Pro for Windows 95 and NT offers you the choice of either desktop or server-based installation. You can install TCP/IP connectivity on each PC and enjoy direct access to TCP/IP resources, with or without a network. Or, you can install it on a NetWare or Windows NT server and have users take advantage of its centralized configuration and management capabilities.

LAN WorkPlace Pro for Windows 95 and NT offers three installation options: Typical, Custom, and Internet. When you select the Typical option, the installation program loads the most commonly used LAN WorkPlace Pro applications for you. If you choose Custom installation, you can choose only those applications you want to install. Or, by choosing Internet, you can install only Internet-specific applications.

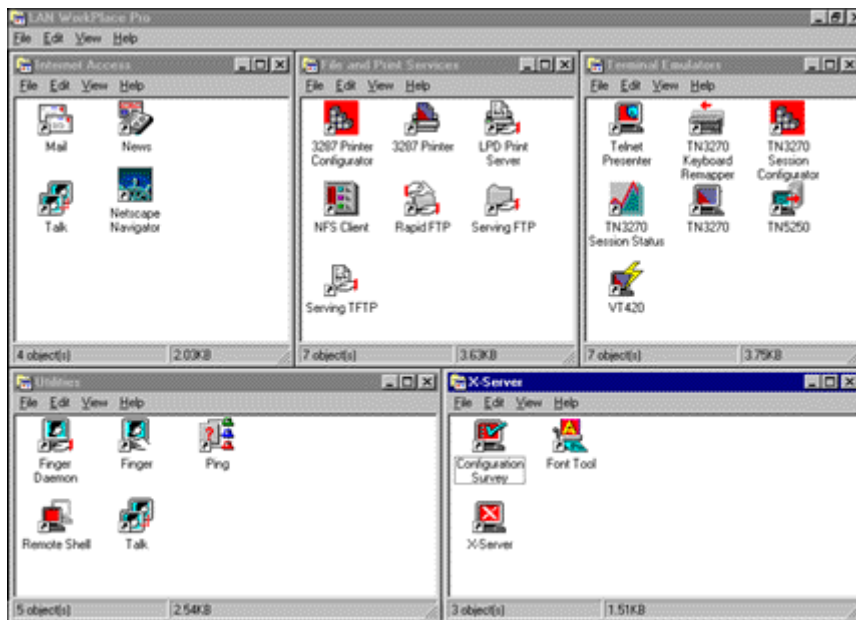
Centralized Configuration and Management

LAN WorkPlace Pro for Windows 95 and NT offers NetWare and Windows NT users centralized installation, workstation configuration, and maintenance. LAN WorkPlace Pro includes a Dynamic Host Configuration Protocol (DHCP) server that supports both DHCP and Bootstrap Protocol (BOOTP). This enables a server-based LAN WorkPlace Pro to dynamically assign and recover IP addresses across your NetWare network. This eliminates the complex and time-consuming process of manually managing IP addresses. And, by dynamically recovering and reassigning unused addresses, LAN WorkPlace Pro enables you to make the most of your limited pool of IP addresses.

Takes Advantage of Native Windows 95 and NT Capabilities

LAN WorkPlace Pro for Windows 95 and NT takes full advantage of the base functions of the Windows 95 and NT desktop operating systems. It utilizes the TCP/IP stack and dialer included with Windows 95 and NT; it also runs almost entirely in 32-bit protected mode, which means that it takes advantage of the increased power and stability offered by the Windows 95 and NT desktop environments.

Figure 2: LAN WorkPlace Pro gives you quick access to information with a full suite of Windows 95 and NT TCP/IP applications.



Netscape Navigator Internet Browser

LAN WorkPlace Pro for Windows 95 and NT includes Netscape Navigator, the market-leading World Wide Web browser that supports Internet technologies such as Java, JavaScript, and Inline Plug-Ins. Netscape Navigator guides you through the ocean of information on the Internet, giving you point-and-click access to text, graphics, sound, and video. Netscape Navigator also includes a news reader, which enables you to participate in any of the thousands of news groups on the Internet, and Netscape mailer, which includes automatic viewing as well as support for Multipurpose Internet Mail Extensions, providing you improved document transmission and compatibility.

Full-Featured Terminal Emulation

LAN WorkPlace Pro for Windows 95 and NT includes Telnet Presenter, a world-class terminal emulator that supports as many as 10 Telnet sessions and enables Windows users to emulate VT52, VT100, or VT220 terminals. Telnet Presenter supports most international character sets and includes an extensive script language for scripting automation. It also supports window resizing. In addition, the integrated Windows TN3270, VT420, and TN5250 clients enable Windows users to easily log in to mainframe computers.

FTP and NFS File Sharing

Included with LAN WorkPlace Pro for Windows 95 and NT is Rapid FTP, an FTP client that enables you to transfer files and directories between NetWare, Windows NT, UNIX, and any other FTP server with drag-and-drop ease. The Windows FTP server supports directory copy and automatic file type determination.

The integrated NFS Client lets you transparently access files on any host supporting the NFS standard. By enabling you to directly mount NFS volumes as virtual hard disks, NFS Client makes remote NFS files appear as though they were stored on your hard disk.

X-Server for X Window Application Sharing

LAN WorkPlace Pro for Windows 95 and NT includes X-Server, which enables you to run X Window System applications on remote hosts right from your Windows workstation. X-Server supports most connection protocols and lets you create scripts and Windows icons for frequently used X-based applications. X-Server supports the latest X11R6 standards and is X/Open certified, ensuring compatibility with current as well as future X applications.

Enterprise Print Services

LAN WorkPlace Pro for Windows 95 and NT provides company-wide print services. The Windows Line Printer Daemon enables UNIX users to send print jobs to PC-based printers; similarly, the Windows Line Printer Requester enables LAN WorkPlace users to send jobs to UNIX-attached printers. LAN WorkPlace Pro also allows users to print to 3287 printers and includes the 3287 printer configurator.

Hardware Requirements

- 486-based PC or above
- 12MB of RAM (minimum)
- 31.5MB of free disk space for full single installation
- 37.5MB of free disk space on server for shared installation
- CD-ROM drive for installation
- Monitor with VGA or higher resolution
- An Ethernet, token-ring, PCMCIA, Fiber Distributed Data Interface (FDDI), or ARCnet adapter with corresponding Open Data-Link Interface™ (ODI) driver

Software Requirements

- Windows 95 or NT

Implementation

LAN WorkPlace Pro for Windows 95 and NT installs directly on your desktop or loads from the server. Its modular architecture enables you to optimize RAM usage; you can load and unload drivers as needed without having to reboot.

LAN WorkPlace Pro supports a wide range of networking hardware by using Novell's ODI™ technology. LAN WorkPlace Pro supports most Ethernet, token-ring, PCMCIA, FDDI, and ARCnet adapters with corresponding ODI drivers. It supports the TCP/IP and NetWare IPX/SPX™ protocols concurrently on Ethernet, token-ring, FDDI, and ARCnet networks. LAN WorkPlace Pro also supports networking software that implements the Network Device Interface Specification driver specification, so it is the ideal choice for any networking environment.

Because the NetWare 4™ and NetWare 3™ NOSs can act as IP routers, you can use LAN WorkPlace Pro with a 486- or Pentium-based NetWare NOS to connect NetWare clients on ARCnet and token-ring LANs to TCP/IP hosts on Ethernet segments.

Specifications

LAN WorkPlace Pro for Windows 95 and NT supports the following U.S. Department of Defense IP standards:

Address Resolution Protocol: RFC 826

Bootstrap Protocol: RFCs 951, 1395

Dynamic Host Configuration Protocol: RFCs 1531, 1533, 1534

Domain Name System Resolver RFCs 1034, 1035

Finger: RFC 1288

File Transfer Protocol: RFC 959

Internet Control Message Protocol: RFCs 792, 950

IP Broadcast Datagrams: RFC 919

IP Broadcast Datagrams with Subnets: RFC 922

Internet Protocol on IEEE 802: RFC 1042

IP on ARCnet: RFC 1201
IP on Ethernet: RFC 894
IP: RFCs 791, 1349
IP Subnet Extension: RFC 950
IPX™ over IP Tunneling: RFC 1234
Line Printer Daemon Protocol: RFC 1179
Management Information Base: RFC 1213
NetBIOS Service Protocol on TCP/IP: RFCs 1001, 1002
NFS: RFC 1094
Post Office Protocol: RFCs 1374, 1725
Point-to-Point Protocol: RFCs 1661, 1332, 1334
Reverse Address Resolution Protocol: RFC 903
Remote Procedure Call: RFC 1057
Serial Line Internet Protocol: RFC 1055
Simple Network Management Protocol: RFC 1157
TCP: RFC 793 (0-64 sockets)
Telnet Protocol: RFC 854
Trivial File Transfer Protocol: RFC 783
User Datagram Protocol: RFC 768 (0-32 sockets)
Van Jacobsen TCP/IP Header Compression: RFC 1144

Ordering Information

LAN WorkPlace Pro for Windows 95 and NT is available from any Novell® partner. For more information, contact your local Novell office or call the Novell Customer Response Center at 1-801-228-4CRC (1-801-228-4272). Or, in the United States and Canada, call toll free 1-888-321-4CRC (1-888-321-4272).

© 1997Novell, Inc.